



## HYBRID SPC RIGID CORE 2G FULL CLICK FLOORING

### Owner's manual

- Installation
- Maintenance
- Warranty

### **Installation Instructions**

Instructions are also available at: <https://admiredflooring.com.au/install-warranty/>

**Scan the following QR Code to watch the “Full Click Hybrid” & Trims videos for install tips and/or to download these instructions:**



1. Tools needed:
  - Utility knife
  - Straight Edge
  - 2-3mm spacers
2. Optional tools for cutting include:
  - Thin angle grinder or “Dremel”™ for finer cutting around door trims or irregular shaped objects
  - Drop saw or Floor Cutter (Guillotine style) for cutting planks faster

**CAUTION:** Do not install your hybrid flooring over carpet and existing soft or unstable floor coverings. This product is not suitable for any outside use, sunrooms/solariums, saunas, or any other rooms that have the potential of flooding. We also highly recommend you do not install in rooms of homes that are not temperature controlled, exposure to long term direct sunlight can cause damage to your floor.

**CHECK THE PLANKS BEFORE INSTALLATION TO BE SURE OF APPEARANCE.**

**We maintain strict quality control during manufacture, it is still recommended to check for blemishes, flaws, etc. Return any such planks to your dealer for replacement before continuing to install.**

### 3. Acclimatisation

You must place your hybrid flooring in the room of installation for 24 hours prior to installation. Be sure the room temperature is between 18 to 29 degrees Celsius. Maintain this temperature during installation as well. Please open the cases by removing the tops of each case during the acclimation period.

Tip: When installing your hybrid floor, be sure to keep dust, dirt, foreign particles away from the locking strip (joints). The cleaner the locking strips remains, the better the join between planks. The planks are best kept in the box until you are ready to install them.

### 4. Subfloor preparation

The subfloor surface **must be smooth, flat, dry, clean and solid (meaning it cannot flex more than 3mm over 120cm eg. old wood floors).**

Carpet staples or adhesive residue must be removed to insure proper installation. Subfloors should be flat and level within a tolerance of 3mm over a span of 120cm. Any unevenness over 3mm must be sanded down or filled with a floor leveller. Voids or humps in the subfloor may prevent the joints from locking properly. Subfloors must be carefully checked for moisture problems. Hybrid flooring is waterproof, however it is not a water-proofer. Any moisture problems need to be addressed prior to installation. New concrete floors need to cure a minimum of 60 days prior hybrid floor installation.

Moisture level should be checked to be less than 15%. If the moisture level is above 15%, do not install.

HANDY TIP: If laying hybrid flooring over existing ceramic tiles, it is recommended to skim coat the grout lines. If the ceramic tiles have an embossing or grout lines over 3mm deep, then floor skim coat with floor leveller.

Any loose or damaged tiles should be patched prior to installing hybrid floor.

If planning to install over existing vinyl planks, please contact Admired Flooring for prior approval.

### 5. Installing Hybrid Flooring



Fig 1.

Installation should begin with a corner and proceed from the wall with the tongue joint facing out away from the wall. Allow a minimum gap of 3-5mm (by using spacers) at the wall for subfloor movement or product expansion

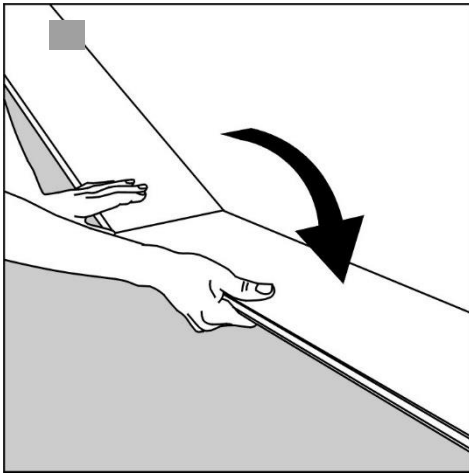


Fig 2.

Second plank, first row.

Press the short end of the next floorboard at an angle to the first one, and then lay down.

Complete the first row in the same way.

Use the above QR code to watch the hybrid install video.

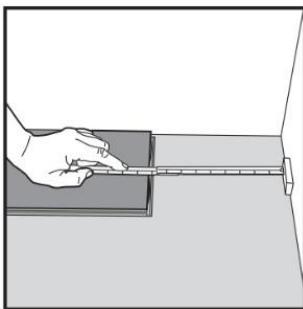


Fig 3.

At the end of the first row, put a spacer to the wall and measure the length of the last plank to fit.

Do not use planks cut less than 30cm long.

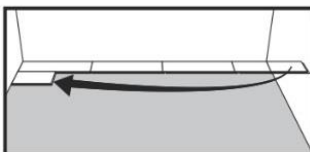


Fig 4.

Second row

First plank min length 300 mm. Put a spacer against the left wall.

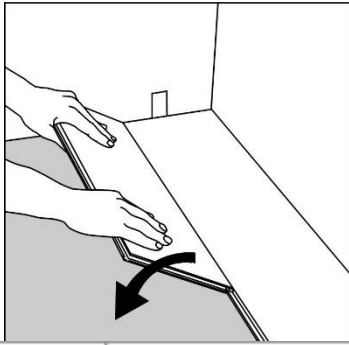


Fig 5.

Place the floorboard an angle against the floorboard in the previous row, press forward and

fold down at the same time. Leave the panel in a somewhat up angled position where the panels start to loc. To make this further easier, a wedge with the suitable angle can be placed under the plank near the short side joint as support.

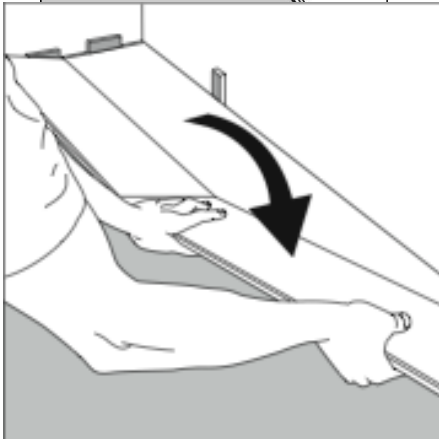


Fig 6.

Second row, second plank

Place the short end of the floorboard at an angle against the previous installed floorboard and fold down all the way.

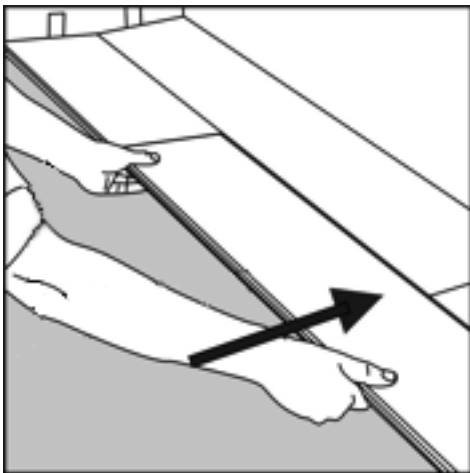


Fig 7.

Push to slide the plank against the row in front so it aligns with the first plank. Put it down like with the first plank when the floorboards are positioned tightly together. The first/previous plank can now be folded completely down to horizontal position and if a wedge is used it can be moved to the next short end joint.

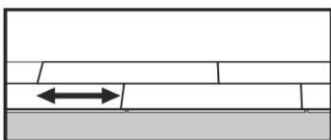


Fig 8.

Staggered joint distance i.e. minimum distance between short ends of planks in parallel rows shall not be less than 30cm.

Do not use planks cut less than 30cm long.

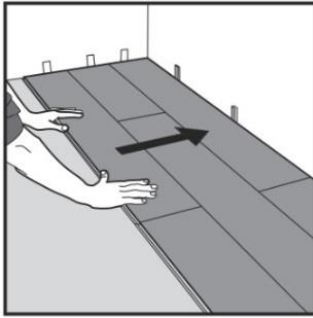


Fig 9.

After 2-3 rows.

Adjust the distance to the front wall by placing spacers. Keep the spacers in position during the entire time of installation and remove once the installation is completed.

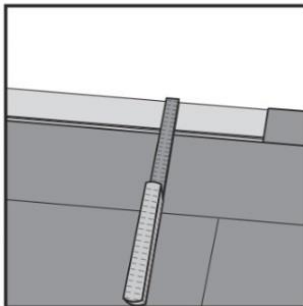


Fig 10.

Last row (and perhaps also first row).

Minimum width 50 mm.

Place a spacer to the wall before measuring.

Cut the panels lengthwise.

**Note:** Never use a hammer (other than a rubber mallet) or tapping block on click joints. This will damage the click joint system and keep the joint from engaging properly to hold the floor together. Tapping the joint edges will void the warranty.

**Expansion/Raft joints** are recommended at 12m long runs in both directions using T-trims or expansion trims. Hallways that are 1-1.5m wide can run up to 15m long without an expansion joint providing that a larger expansion gap of 5-8mm is used at both ends of the hallway.

### Disassembling panels



Fig 10.

Separate the whole row by carefully lifting up and release the whole row.



Fig 11.

Disassemble the panels by **sliding the short ends horizontally,**

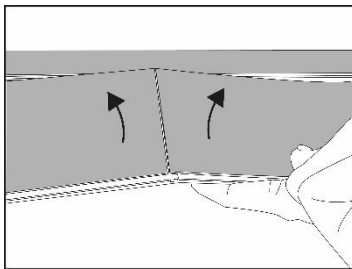


Fig 12.

**Don't fold up end joint too far, as this damages the end joint profile.**

### Horizontal installation

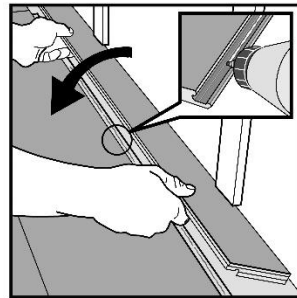
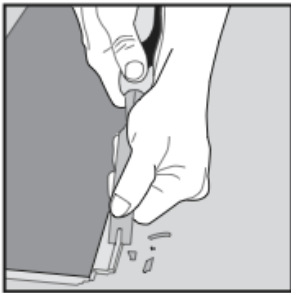


Fig 13 and fig 14.

Cut off the vertical locking part of the strip with a chisel, put applicable glue on the strip and push the planks horizontally together. If necessary place some spacers between last board and the wall during the hardening time of the glue. The method can also be applied to the short ends.

## CARE & MAINTENANCE GUIDE

After installing the floor, we recommend an initial clean to remove any loose dirt or debris that may have been introduced during the installation process.

Please check any new cleaning agents on a small test patch of the floor in an inconspicuous area, and avoid using harsh abrasive cleaners or alcohol ammonia based cleaning products.

1. First sweep and vacuum the floor surface to ensure removal of all loose dust dirt, and debris. Using a mop (or, for large areas, a floor cleaning machine with a low abrasive pad), scrub the flooring surface. Using warm, clean water, rinse several times or as needed, then use a dry mop or wet vacuum to remove the water and allow drying.
2. Refrain from allowing pets with unclipped nails to damage your floors. It may result in severe scratching to the surface. The same is true for any high heeled shoes that do not have proper cushion tips on the heels.
3. Avoid exposure to direct sunlight for prolonged periods of time. During peak sunlight hours, use drapes or blinds to minimise the direct sunlight on the floors.  
Most types of floor coverings will be affected by continuous strong sunlight. To avoid an uneven appearance, please consider relocations of rugs from time to time. In addition, excessive temperatures are not good for resilient floors. Some natural ventilation or intermittent air conditioning in vacant homes should be considered.  
Long term continuous inside temperatures over 35 degrees Celsius combined with strong direct sunlight will damage your flooring and can cause installation to fail.
4. Always sweep or vacuum your Admired Hybrid Flooring before cleaning so that all loose dirt and particles are removed. Some hand wiping may be required to remove tough spots and spills. For best results do not use combination cleaner/finish products.
5. DO NOT WAX your Admired Hybrid Flooring. The floor surface is very dense and non-porous which prevents wax from penetrating and thus builds up a bed for yellowing and dirt collection. The same non-porous feature also provides all the protection against wear and staining that you will need.
6. If your Admired Hybrid Flooring has been exposed to excessive amounts of water due to flooding, do not panic, Admired Hybrid Flooring is waterproof. Simply remove the water as quickly as possible. A dehumidifier should be promptly turned on in the room to reduce the moisture levels back to normal. Do not dry the room below the normal moisture level.  
If flood water has access underneath from the wall edges, it is best to pull up the planks in those areas to allow the water underneath to dry and prevent mould growth.
7. Use floor mats under rolling chairs and floor protectors under heavy furniture and dining chairs/stools. Never drag furniture across vinyl flooring.

## **First Aid for your Admired Hybrid Flooring**

1. To remove chewing gum, adhesive, crayon, candle wax and similar types of substances, apply ice until the unwanted substance becomes hard and brittle enough to crumble off. The residue can then be removed with mineral spirits.
2. Extra deep heel marks, caster marks etc, rub with green "Scotch-Brite pad"™.
3. For dark spots caused by ink or other chemicals, clean the spot as per previous point.

**For a copy of the Care & Maintenance Guide, please visit: [www.admiredflooring.com.au/care](http://www.admiredflooring.com.au/care)**

## **WARRANTY**

Warranty will only apply to quality issues from faulty manufacture.

- Residential Warranty period is 20 years
- Commercial Warranty period is 10 years

All planks purchased for an installation should be inspected by you or your installer. Planks that appear to be visually defective should not be installed. If visually defective planks of the Products are installed in the subject of the claimed floor, will not be claimable. If a problem occurs during installation, the job should be paused immediately. The proper redress is to report the problem to your dealer and distributor who, in turn will contact the manufacturer. Any costs caused by continued installation after the problem is reported will not be covered by the manufacturer.

This limited warranty covers manufacturing and visual defects, provided that the product is installed and maintained according to the instructions in the Installation and Maintenance Guide in effect at the time of the purchase. Planks with affected with such defects will be replaced by the supply only of new planks. This warranty shall not include loss of time, inconvenience, uninstallations, removal, or reinstallation of the affected material and any other incidental or consequential damages.

This warranty is in lieu of any other warranties expressed or implied.

This warranty service is available only by notice to your distributor through the dealer from whom the purchase was made. Notification must be accompanied by a copy of the original invoice and can only be authorised by your distributor.

Warranty Exclusions and Conditions:

- Warranty coverage for any replacement flooring planks will be limited to the remaining time of the original warranty.
- Warranty coverage does not apply to seconds, off-quality, or "as-is" goods.
- Warranty coverage applies only to the original purchaser and the original installation site and is not transferrable.
- Warranty coverage does not apply to conditions or defects caused by improper installation, the use of improper materials during installation, or inadequate sub-flooring preparation as described in the Installation instructions.
- Warranty does not apply to floors with alkalis in the subfloor or conditions arising from hydrostatic pressure or exterior applications.
- Warranty coverage does not apply to construction-related damage.
- Warranty coverage does not apply to colour variations between samples or printed illustrations and the actual production runs.
- Warranty coverage does not apply to reduction of gloss from use or improper maintenance.
- Warranty coverage does not apply to product sold through unauthorised dealers.
- Warranty coverage does not apply to conditions cause by improper use or maintenances such as:



- Damage that results from not following maintenance instructions
- Scuffs, scratches, cuts, staining from rubber backed mats, or damages or discoloration from carpet dyes, fertilizer, or other chemicals.
- Damages caused by burns, flooding, fires, and other accidents.
- Damage caused by abuse (such as dragging heavy or sharp objects across the floor without proper protection for the floor).
- Damage caused by caster wheels or vacuum cleaner beater bars.
- Failure to support furniture with floor protectors/mats made of non-staining felt or plastic (with no sharp edges)
- Warranty coverage does not cover discoloration from heat and sunlight.

**For further Warranty Conditions, please visit [www.admiredflooring.com.au/install-warranty/](http://www.admiredflooring.com.au/install-warranty/)**